

# Denplan Essentials

## Benefits at a glance from October 2018



Denplan Essentials is an easy way of keeping up the great habit of regular check-ups with your dentist, so you'll always get expert advice about keeping your teeth in great condition and avoid any surprises.

It's worthwhile remembering that treatment is at the discretion of your dentist. This is a summary of the benefits, exclusions and limitations. Full terms and conditions can be found in the Membership Booklet.

Denplan Essentials gives you
✓ An easy way to spread the cost of your routine dental care and preventive advice
Routine preventive care from your dentist which includes
✓ Check-ups (up to contract maximum)
✓ Scaling, polishing and other hygiene treatments (up to contract maximum)
✓ Preventive dental advice
✓ Dental x-rays
✓ Any additional treatment specified as included in your contract
Denplan Essentials does not cover
✗ Restorative dental treatments including fillings, crowns, bridges or dentures
✗ Laboratory fees and prescriptions
✗ Any treatment excluded by the dentist in your contract, which is then payable by you to the dentist
✗ Referral to a specialist or specialist treatment
✗ Treatment carried out by someone other than by your registered dentist, except when you need emergency temporary dental treatment
✗ Orthodontics, implants, cosmetic treatment
✗ Sedation fees

For 60p a month you can add Denplan Supplementary Insurance which includes:

### Worldwide dental injury and dental emergency cover

- ✓ Temporary emergency dental treatment in the UK (up to £450 per incident. Maximum amount payable £900 per calendar year)
- ✓ Temporary emergency dental treatment when overseas (up to £470 per incident. Maximum amount payable £940 per calendar year)
- ✓ 24-Hour Worldwide Dental Emergency Helpline

### Hospital cash payment

- ✓ Up to £62 for each night you stay in hospital under the care of a dental or maxillofacial surgeon for dental treatment for up to one year

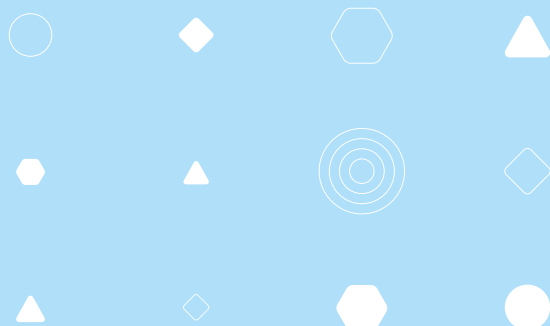
### Mouth cancer cover

- ✓ Up to £12,000 towards one course of mouth cancer treatment for up to 18 months following diagnosis (smokers are included)

### Your Denplan Supplementary Insurance does not cover

- ✗ Emergency dental treatment provided by your own dentist or a dentist/specialist acting on your dentist's behalf
- ✗ Dental injury caused whilst training for or participating in contact sports, unless appropriate mouth protection is worn
- ✗ Mouth cancer diagnosed before joining a Denplan payment plan or within 90 days after the date you joined (or for which tests or consultations began within those 90 days)
- ✗ Mouth cancer situated in the tonsils

If you'd like to find out more, please ask a member of the practice team or visit [www.denplan.co.uk/patients](http://www.denplan.co.uk/patients) or email [cae@denplan.co.uk](mailto:cae@denplan.co.uk) or call us on 0800 401 402



# Questions and answers



## Q What is Denplan Essentials?

A Denplan Essentials is an easy way to budget for your private dental check-ups and hygiene treatments, helping you to prevent dental problems in the future. For 60p per person per month this plan can include worldwide dental injury and dental emergency cover (Denplan Supplementary Insurance) and access to our 24-Hour Worldwide Dental Emergency Helpline for support and dental advice.

## Q When will my Denplan Essentials contract start?

A Your dentist will agree a start date for your Denplan Essentials contract with you. This date will always be on the first day of the month.

## Q What if I need restorative treatment – is this covered by Denplan Essentials?

A No. Any restorative dental treatment needed will have to be paid for separately (e.g. fillings, crowns or bridges), unless your dentist chooses to provide additional treatment as part of your contract. The practice team will be able to let you know your dentist's treatment fees.

## Q How much does it cost?

A As the dentist sets their own fees, they will be able to give you an indication of the price you'll pay. It will depend on the amount of care you need. Please note that there is a one-off registration charge of £15 on joining.

## Q Are there any discounts available?

A There may be discounts where more than one member of a family (or group) is registered with any member dentist at one practice, the following discounts may apply:

Two family/group members	- 5%
Three family/group members	- 10%
Four or more family/group members	- 15%

Please note: if your dentist offers a discount, to qualify all payments must be collected using a single Direct Debit. All correspondence will be sent to the address of the person who pays for the dental payment plans.

## Q Who am I in contract with?

A For the dental care you receive under Denplan Essentials you are in contract with your dentist. For the Denplan Supplementary Insurance element you are in contract with Simplyhealth Access.

